

# Technical data sheet



## Product features

### Cooling cabinet 1400 l GN 2/1, stainless steel

|              |                 |          |
|--------------|-----------------|----------|
| <b>Model</b> | <b>SAP Code</b> | 00006113 |
|--------------|-----------------|----------|



- GN / EN size in device: GN 2/1
- Chamber volume [l]: 1400
- Minimum device temperature [°C]: -2
- Maximum device temperature [°C]: 8
- Insulation thickness [mm]: 60
- Control type: Digital
- Interior lighting: No
- Door lock: No

|                            |                    |  |        |
|----------------------------|--------------------|--|--------|
| <b>SAP Code</b>            | 00006113           | <b>Chamber volume [l]</b>              | 1400   |
| <b>Net Width [mm]</b>      | 1388               | <b>Number of internal parts</b>        | 6      |
| <b>Net Depth [mm]</b>      | 826                | <b>Number of GN / EN</b>               | 6      |
| <b>Net Height [mm]</b>     | 2008               | <b>GN / EN size in device</b>          | GN 2/1 |
| <b>Net Weight [kg]</b>     | 162.00             | <b>Minimum device temperature [°C]</b> | -2     |
| <b>Power electric [kW]</b> | 0.325              | <b>Maximum device temperature [°C]</b> | 8      |
| <b>Loading</b>             | 230 V / 1N - 50 Hz | <b>Refrigerant</b>                     | R290   |
| <b>Energy class</b>        | E                  |  |        |

# Technical data sheet



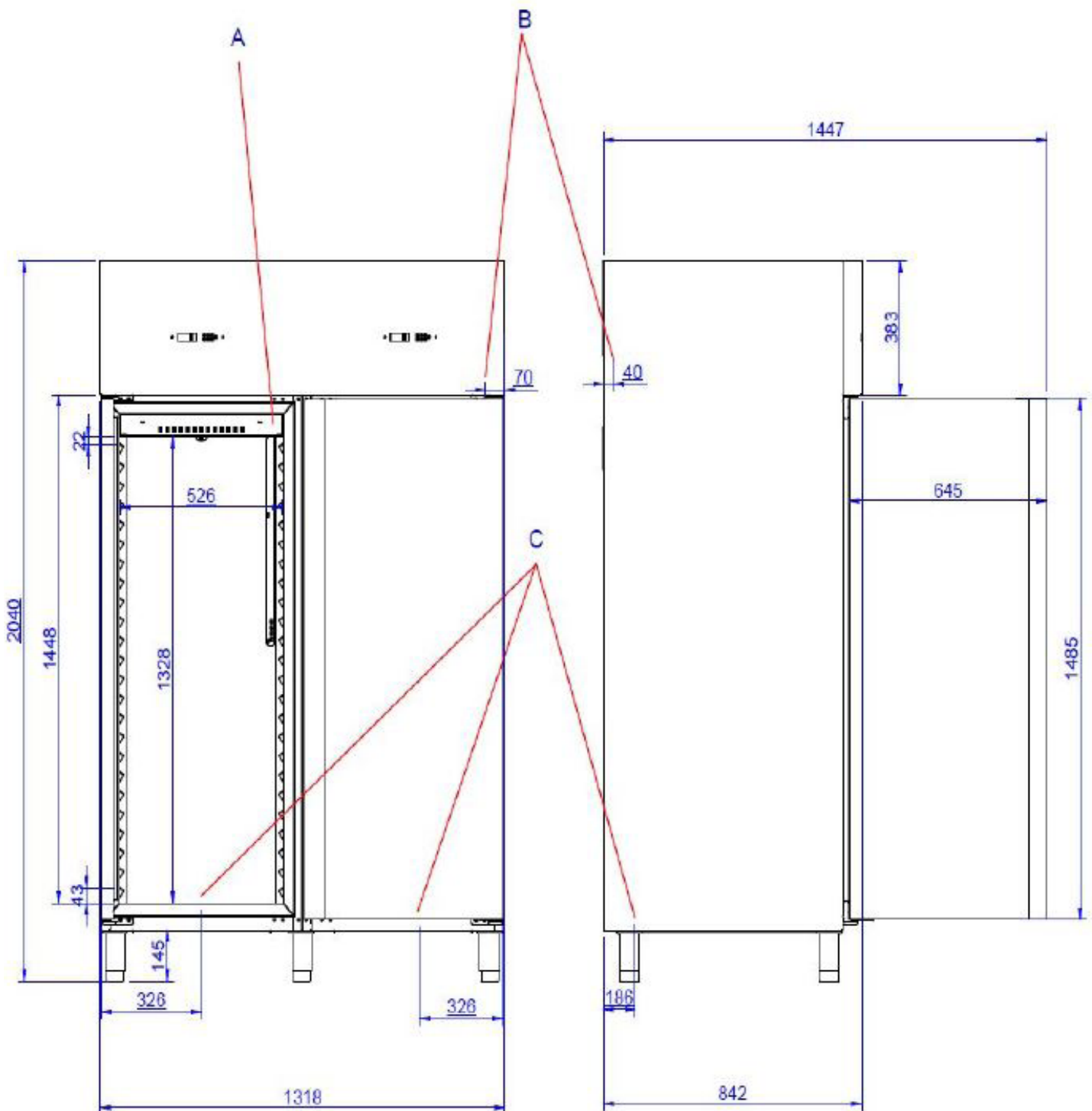
Technical drawing

Cooling cabinet 1400 l GN 2/1, stainless steel

Model

SAP Code

00006113



# Technical data sheet



## Product benefits

### Cooling cabinet 1400 l GN 2/1, stainless steel

Model

SAP Code

00006113

1

#### Insulation 60mm

minimal heat loss

- saving electricity
- less wear and tear on the compressor due to less frequent switching

2

#### Two-sided opening

possibility to change the opening from the right to the left side

- greater variability of use

3

#### All-stainless design

outer shell

only stainless steel intended for food contact is used

good maintenance

zero contamination

resists even weaker acids

- long service life and high durability

4

#### Automatic defrosting

maintenance-free operation

continuous defrosting

- zero requirement for frost control by the operator

5

#### Height adjustable feet

maintenance-free operation

continuous defrosting

- precise positioning of the fridge in uneven floors, ensures correct operation of the unit thanks to the balance

# Technical data sheet



## Technical parameters

### Cooling cabinet 1400 l GN 2/1, stainless steel

**Model**

**SAP Code**

00006113

**1. SAP Code:**

00006113

**2. Net Width [mm]:**

1388

**3. Net Depth [mm]:**

826

**4. Net Height [mm]:**

2008

**5. Net Weight [kg]:**

162.00

**6. Gross Width [mm]:**

1450

**7. Gross depth [mm]:**

850

**8. Gross Height [mm]:**

2150

**9. Gross Weight [kg]:**

206.00

**10. Device type:**

Electric unit

**11. Power electric [kW]:**

0.325

**12. Loading:**

230 V / 1N - 50 Hz

**13. Energy class:**

E

**14. Refrigerant:**

R290

**15. Cooling type:**

Dinamic

**16. Material:**

Stainless steel

**17. Device properties 2:**

Cooling

**18. GN / EN size in device:**

GN 2/1

**19. Number of internal parts:**

6

**20. Number of GN / EN:**

6

**21. Chamber volume [l]:**

1400

**22. Adjustable feet:**

Yes

**23. Insulation thickness [mm]:**

60

**24. Number of doors:**

2

**25. Unit:**

Yes

**26. Control type:**

Digital

**27. Door lock:**

No

**28. Interior lighting:**

No

# Technical data sheet



Technical parameters

Cooling cabinet 1400 l GN 2/1, stainless steel

|              |                 |          |
|--------------|-----------------|----------|
| <b>Model</b> | <b>SAP Code</b> | 00006113 |
|--------------|-----------------|----------|

**29. Minimum device temperature [°C]:**

-2

**31. Thaving cycle:**

Yes

**30. Maximum device temperature [°C]:**

8